



***School Continuous
Improvement Plan for 2014-
15
and
2013-14 Results Report***

Combined 2014 Accountability Pillar Overall Summary

Measure Category	Measure Category Evaluation	Measure	Crescent Valley School			Alberta			Measure Evaluation		
			Current Result	Prev Year Result	Prev 3 Year Average	Current Result	Prev Year Result	Prev 3 Year Average	Achievement	Improvement	Overall
Safe and Caring Schools	Excellent	Safe and Caring	89.0	92.5	91.8	89.1	89.0	88.6	Very High	Maintained	Excellent
Student Learning Opportunities	n/a	Program of Studies	81.2	75.6	77.8	81.3	81.5	81.1	High	Maintained	Good
		Education Quality	90.0	93.2	91.1	89.2	89.8	89.5	Very High	Maintained	Excellent
		Drop Out Rate	n/a	n/a	n/a	3.3	3.5	3.6	n/a	n/a	n/a
		High School Completion Rate (3 yr)	n/a	n/a	n/a	74.9	74.8	73.8	n/a	n/a	n/a
Student Learning Achievement (Grades K-9)	Concern	PAT: Acceptable	71.7	81.6	78.4	74.0	75.3	75.5	Low	Maintained	Issue
		PAT: Excellence	8.1	13.8	16.8	19.0	19.1	19.6	Very Low	Declined	Concern
Student Learning Achievement (Grades 10-12)	n/a	Diploma: Acceptable	n/a	n/a	n/a	85.4	84.2	83.4	n/a	n/a	n/a
		Diploma: Excellence	n/a	n/a	n/a	21.0	19.5	19.1	n/a	n/a	n/a
		Diploma Exam Participation Rate (4+ Exams)	n/a	n/a	n/a	50.5	56.6	55.9	n/a	n/a	n/a
		Rutherford Scholarship Eligibility Rate (Revised)	n/a	n/a	n/a	60.9	61.3	60.8	n/a	n/a	n/a
Preparation for Lifelong Learning, World of Work, Citizenship	n/a	Transition Rate (6 yr)	n/a	n/a	n/a	59.2	59.5	59.1	n/a	n/a	n/a
		Work Preparation	81.5	85.0	83.7	81.2	80.3	80.0	High	Maintained	Good
		Citizenship	83.0	90.6	89.6	83.4	83.4	82.6	Very High	Declined	Good
Parental Involvement	Excellent	Parental Involvement	82.5	92.5	87.6	80.6	80.3	80.0	Very High	Maintained	Excellent
Continuous Improvement	Acceptable	School Improvement	76.9	88.0	85.8	79.8	80.6	80.2	High	Declined	Acceptable

Goal One: An excellent start to learning

Outcome: Children are reaching emotional, social, intellectual and physical development milestones and are ready for school.

- There are no required performance measures for this goal. Schools are encouraged to incorporate early development data available at the local level.

Comment on Results

Strategies

1. Utilize EYE observations to guide instruction. *Teachers*
2. Ensure student requiring PUF supports and identified and supports/programming and resources are put in place as soon as possible. *(ECS teachers, CTS, Admin)*
3. Ensure kindergarten students are included in school-wide activities and provide opportunities for them to become contributing members of the school and local community (Assembly performances, School Yard clean-up, Literacy events, Kids Conference, Terry Fox Walk.)
4. Utilize LLI Orange kit to enhance reading instruction. *Teachers*
5. Utilize "Handwriting Without Tears" printing program. *Teachers*
6. Utilize Family School Liaison to provide student and family supports on an 'as needs' basis. *Learning Team, FSL*
7. Utilize Speech Language support on an 'as needs' basis. *Teachers*
8. Utilize Occupational Therapist support on an 'as needs' basis. *Teachers*

Goal Two: Success for Every Student

Outcome: Students achieve student learning outcomes.

Outcome: Students demonstrate proficiency in literacy and numeracy.

Performance Measure	Results (in percentages)					Target	Evaluation			Targets		
	2010	2011	2012	2013	2014	2014	Achievement	Improvement	Overall	2015	2016	2017
Overall percentage of students in Grades 6 and 9 who achieved the acceptable standard on Provincial Achievement Tests (overall cohort results).	76.5	69.1	84.4	81.6	71.7		Low	Maintained	Issue			
Overall percentage of students in Grades 6 and 9 who achieved the standard of excellence on Provincial Achievement Tests (overall cohort results).	13.7	13.2	23.3	13.8	8.1		Very Low	Declined	Concern			

Comment on Results

Our PAT results indicate that the interventions we are putting in place are not having the desired effect—a number of students are still struggling.

Strategies

New Strategies:

1. Begin regularly scheduled Collaborative Team Meetings using "student learning boards" to ensure supports are put in place for all of our students. *(Staff)*
2. Focus staff attention on Math RTI and began to build a toolbox of strategies to support student learning in math. *(Staff)*
3. Purchase an additional set of classroom laptops to increase student access. *(Admin, Tech dept.)*
4. Set up Office 365 accounts for students in grades 4-7. *(Admin, Tech dept.)*

Carry Forward Strategies:

1. Offer LLI Red Box series to provide additional support for struggling readers in the elementary grades. *(Learning Services, Admin, Teachers)*
2. Enhance instruction through technology in individual classrooms to allow for greater opportunities for enrichment and practice (Ipad, laptops, programs, audio books). *Learning Team*
3. Use of Mathletics for practice and enrichment to improve recall of Math concepts at all grade levels. *Teachers*
4. Utilize surround sound systems in all learning environments to ensure all students can hear instruction. *Teachers*
5. Continue to work with ATB to provide a Junior Bank at Crescent Valley. *Admin, teacher volunteer, ATB*
6. School-wide focus on RTI in reading based on universal screens (AIMSweb), Fountas and Pinnell Benchmark Assessments and scheduled Tier II and Tier III intervention periods for 'ability-level' groups of students. *All staff*
7. Focus on enrichment and practice for students who are achieving the reading standard at each grade level during the intervention period. *All staff*
8. Focus on Super 6 reading strategies. *Staff*
9. Utilize Literacy Place resources at all grade levels (Literacy Place, Moving up and Stepping Up) *Admin*
10. Encourage students to participate in the school-wide home reading program. *Staff*
11. Schedule 60 minutes/week embedded RTI planning time for each PLC as well as Friday pm time). *Admin*
12. Provide Leveled Literacy Intervention to Grade 1 and 2 students in need. *LLI teacher, Admin.*
13. Utilize "6+1 writing traits" program to improve students' writing across the curriculum at all grade levels. *Teachers, Admin.*
14. Analyze all relevant school data to determine our GAN. *Principal, Staff*
15. Provide a variety of noon-hour programs to support academic and social improvement (Computer Club, Intramurals, Homework Help, Handbell Choir) *Administration (scheduling) Staff (programming and supervision)*
16. Participate in an annual Math conference and school-wide problem solving activities. *Numeracy Committee*
17. Participate in cross-graded activities. *Classroom teachers*
18. Celebrate student improvement and school initiatives through monthly assemblies. *Staff*

Outcome: *Students demonstrate citizenship and entrepreneurship.*

Performance Measure	Results (in percentages)					Target	Evaluation			Targets		
	2010	2011	2012	2013	2014	2014	Achievement	Improvement	Overall	2015	2016	2017
Percentage of teachers, parents and students who are satisfied that students model the characteristics of active citizenship.	82.8	88.6	89.6	90.6	83.0		Very High	Declined	Good			
Percentage of teachers and parents who agree that students are taught attitudes and behaviours that will make them successful at work when they finish school.	71.4	82.9	83.4	85.0	81.5		High	Maintained	Good			

Comment on Results

We continue to focus on being a "BEAR" and offer many opportunities for service leadership.

Strategies

New Strategies:

1. Utilize our Success Coach to provide team building and cooperative games. *Success Coach*
2. Utilize the SWAT (Student Wellness Action Team) to increase active citizenship and positive attitudes and behaviors. *Health Champion, Success Coach and SWAT*
3. Increase student involvement in school announcements—student announcers—who will include, "Wellness Wednesday" tips and "Funny Friday" jokes. *Health Champion and SWAT*
4. Organize a student mentorship program where older students are partnered with younger students to support both academic and social skills. *Success Coach, Admin, staff*

Carry Forward Strategies:

1. Support the bi-annual "Imagine Conference" by sending students and encouraging them to share their experiences with classmates. *Classroom teachers, FSL*
2. Provide opportunities for students to participate in citizenship activities:
 - a. Service Leadership events such as: Terry Fox Walk, Jump Rope or Hoops for Heart, UNICEF, Pitch-In, Operation Christmas Child, window painting at IGA, Garage Sale for Ghana, Winter Craft Sale, Visits to Seniors Home *Administration and volunteer staff*
 - b. School-wide recycling
 - c. Safe and caring school initiatives: .Safety Patrols, Office Helpers, Milk Program *Administration and volunteer staff*
 - d. Student leadership opportunities such as: cross graded activities, special events, school dances. *Administration and Grade 5 - 7 teachers*
 - e. School enhancement: changing the school sign, making posters to share school information, collecting budget savers to purchase lunch items, keeping the school and playground litter free... *Staff*
3. Recognize and celebrate students who are caught being "BEARS" (Students demonstrating Belonging, Excellence, Accountability, Respect and Safety). *Staff*
4. Participate in the "Student of the Week" program with Fox Radio. *Classroom teachers*
5. Support Life Skills program in consultation with staff, parents and Student Support Services. *CST, support staff member, parent rep. SSS*
6. Provide opportunities for all students to demonstrate their proficiency in the learning competencies (Science Fair, Math convention, Education Week activities, Night of the Notables, Concerts...). *Teachers*
7. Celebrate learning through monthly assemblies where stakeholders (students, staff, and parents) recognize students' social and academic improvements. *Teachers and Administration*
8. Build school pride (Spirit wear, Spirit days, Monthly Assemblies, Special Events...) *Staff*
9. Organize and participate in a bi-annual Kids Conference to build career awareness. *Special event commit*

Goal Three: Quality teaching and school leadership

Outcome: Teacher preparation and professional growth focus on the competencies needed to help students learn. Effective learning and teaching is achieved through collaborative leadership.

Performance Measure	Results (in percentages)					Target	Evaluation			Targets		
	2010	2011	2012	2013	2014	2014	Achievement	Improvement	Overall	2015	2016	2017
Percentage of teachers, parents and students satisfied with the opportunity for students to receive a broad program of studies including fine arts, career, technology, and health and physical education.	71.0	78.6	79.3	75.6	81.2		High	Maintained	Good			

Comment on Results

We continue to offer a variety of programs that encourage well rounded students (focus on academics, social and emotional).

Strategies

New Strategies:

1. Adjust the PE and Music schedules to provide three classes of each (music and PE)/week with specialist teachers for all students in grades 1-7. *Admin, Teachers*
2. Utilize our Success Coach to provide supplementary programs to increase students' resiliency and mental health capacity. *(Success Coach, Admin)*
3. Utilize information/data gathered from the Tell Then From Me surveys in future School Improvement Plans. *(Admin)*
4. Utilize information/data gathered from Thought Exchange in future School Improvement Plans. *(Admin)*

Carry Forward Strategies: Continue to:

5. Provide FSL instruction using the Rosetta Stone program on the SMARTboard in a large group setting to increase interaction between students and the teacher. *4-7 teachers*
6. Offer LLI Red Box for students in grades 4-7 in need. *Trained teachers*
7. Continue to use systematic, school-wide interventions to ensure students achieve the critical outcomes in reading. *Staff*
8. Offer Leveled Literacy Intervention to Grade 1 and 2 students in need. *LLI teacher, Admin.*
9. Provide an Enhanced Full Day ECS program. *ESC, Administration, ECS teachers*
10. Provide a Language Enrichment program. *ESC and LE teacher*
11. Support the Life Skills program in consultation with staff, parents and Student Support Services. *CST, support staff member, parent rep. SSS*
12. Offer the Healthy Life Styles program for Grade 7 students (a focus on physical, emotional and social health). *Grade 7 teachers, Administration, Community members*
13. Put on a Christmas play involving students in grades K-7 *Teacher*
14. Provide a wide range of field trip activities. *Teachers, Administration and School Council*
15. Utilize Sandra Davenport to provide a Cree language introductory course grade 4 students and a level 2 course for students who would like to continue their language learning. *Grade 4 teacher, FNMI facilitator*
16. Utilize 3V to enhance programs. *Administraton, Technology contact, teachers, Gordon Booth*
17. Provide a variety of noon-hour and after-school programs to support academic and social improvement (Computer Club, Reading Club, Intramurals, Homework Help (Handbell Choir). *Administration (scheduling and supervision), staff (supervision).*
18. Provide the "Swim to Survive" program for students in grades 1-7. *Staff, School Council*
19. Provide a Cross Country Ski program for students in grades 1-7. *Staff, School Council*
20. Organize and host a "Kids Conference" during Education Week. *Staff*

Goal Four: Engaged and effective governance

Outcome: The education system demonstrates collaboration and engagement.

Performance Measure	Results (in percentages)					Target	Evaluation			Targets		
	2010	2011	2012	2013	2014	2014	Achievement	Improvement	Overall	2015	2016	2017
Percentage of teachers and parents satisfied with parental involvement in decisions about their child's education.	79.8	83.7	86.7	92.5	82.5		Very High	Maintained	Excellent			
Percentage of teachers, parents and students satisfied with the overall quality of basic education.	87.2	87.8	92.5	93.2	90.0		Very High	Maintained	Excellent			

Comment on Results

(an assessment of progress toward achieving the target)

Strategies

New Strategies:

1. Work in collaboration with school staff and DLT to determine how to utilize information gathered through "Thought Exchange" and the TTFM survey to guide our planning. *(Staff)*

Carry Forward Strategies:

1. Promote "University of Parental Involvement (UPI)" to offer degrees in Parental Involvement. *Admin, Teachers, School Council*
2. Update the school web page on a monthly basis to ensure information is current. *Administration*
3. Include the Parent Handbook in each student's planner. *Administration*
4. Meet with P4K on a monthly basis to seek input into school decisions. *Administration*
5. Work with the P4K (Parents for Kids) (School Council) chairperson to set the P4K meeting agenda in advance and ensure a copy of it is posted before the meeting. *Principal, P4K Chairperson*
6. Ensure P4K information is placed on the School web page. *Administration, Technology contact, P4K secretary*
7. Encourage and invite parent volunteers, community members, trustees to participate in school activities (Education Week, Talent show, Science Fairs, Math Convention). *Staff*
8. Actively seek stakeholder input via P4K meetings into the school's mission, vision values and goals. *Administration*
9. Distribute copies of the monthly school newsletter to each family within the school. Newsletters will include a: "Did you Know?" section each month. *Principal and Administrative assistant*
10. Ensure all classroom teachers have regular home/school communication through student planners. *Classroom teachers*
11. Distribute "user friendly" versions of school reports to all stakeholders (SCIP, AERR, Budget, PAT results). *Principal*
12. Invite parents to monthly assemblies where students' social and academic improvements are recognized. *Teachers and Administration*
13. Continue to involve parents in the IPP creation process. *Classroom teachers*
14. Send home three formal written progress reports and encourage parent attendance at "Welcome Back Picnic" and the two scheduled student-parent-teacher interviews. *Teachers and Administration*
15. Utilize the Crescent Valley Communication Plan to improve internal and external communications within the school community. *Administration*

Outcome: *Students and communities have access to safe and healthy learning environments.*

Performance Measure	Results (in percentages)					Target	Evaluation			Targets		
	2010	2011	2012	2013	2014	2014	Achievement	Improvement	Overall	2015	2016	2017
Percentage of teacher, parent and student agreement that: students are safe at school, are learning the importance of caring for others, are learning respect for others and are treated fairly in school.	84.7	91.2	91.7	92.5	89.0		Very High	Maintained	Excellent			
Percentage of teachers, parents and students indicating that their school and schools in their jurisdiction have improved or stayed the same the last three years.	90.0	80.5	89.0	88.0	76.9		High	Declined	Acceptable			

Comment on Results
(an assessment of progress toward achieving the target)

Strategies
Safe and Caring
New Strategies:

1. Collaborative Team Meetings to ensure we meet the needs of all students (including social-emotional). *(Staff)*
2. SWAT team—provides peer support for students during outside break. *(Health Champion, Success Coach and the SWAT team)*
3. A variety of ‘resiliency programs’ are occurring for both primary and elementary students. These programs focus on social skills, friendships, self-awareness and acceptance...*(Success Coach)*

Carry Forward Strategies: Continue to

4. Promote and enhance student mental health through supports/resources offered within our Hinton community—guest speakers, presentations... *Admin, FSL*
5. Follow guidelines set out in the OHS toolbox to ensure staff and students can enjoy a safe school environment. *OHS committee*
6. Provide training and practice for staff members to become proficient in the use of the Emergency Preparedness Plan. *Admin, Staff*
7. Provide a “Safe Arrival” program in the morning and following lunch. *Administrative assistants*
8. Follow Threat Assessment guidelines/protocols to ensure the safety of all our students. *Administration, FSL*
9. Have the CV Learning Team meet on a regular basis to discuss children in need/programming. *Administration, AISI, FSL, CST*
10. Implement a “Locked Door” policy during school hours. *Administration*
11. Refer students who require counseling beyond what the FSL can offer to the FST. *FSL*
12. Provide breakfast and lunch to students in need. *Administration*
13. Offer the DARE program to students in Grade 6. *RCMP, Grade 6 teachers*
14. Deliver the Rainbows, Social Skills program. *Family School Liaison in consultation with Classroom teachers*
15. In partnership with P4K, provide students in grades 1-7 with a water safety program. *Staff and School Council*
16. Evaluate and revise (if necessary) the CVS discipline policy each year. *Principal in discussion with staff and school council*
17. Utilize Effective Behavior Supports to ensure a safe and caring school. *Staff*
18. Utilize BEARS to promote positive behavior within the school. *Staff*
19. Provide a wide variety of activities for children to engage in over the lunch hour and recess breaks (street hockey, basketball, computer club, library, intramural program, school yard games...) *Staff*
20. Ensure supervisors wear bright red vests to increase their visibility while on the playground. *Staff*
21. Participate in a variety of school-wide citizenship activities to actively involve students in the community at large (Terry Fox Walk, Pitch-In, Operation Christmas Child, UNICEF) *Staff and Students*

School Improvement

New Strategies:

1. CV is participating in Thought Exchange and the Tell Them From Me surveys to gather information for our school community. Data gathered will drive our school improvement plans. *(Staff)*

Carry Forward Strategies: Continue to:

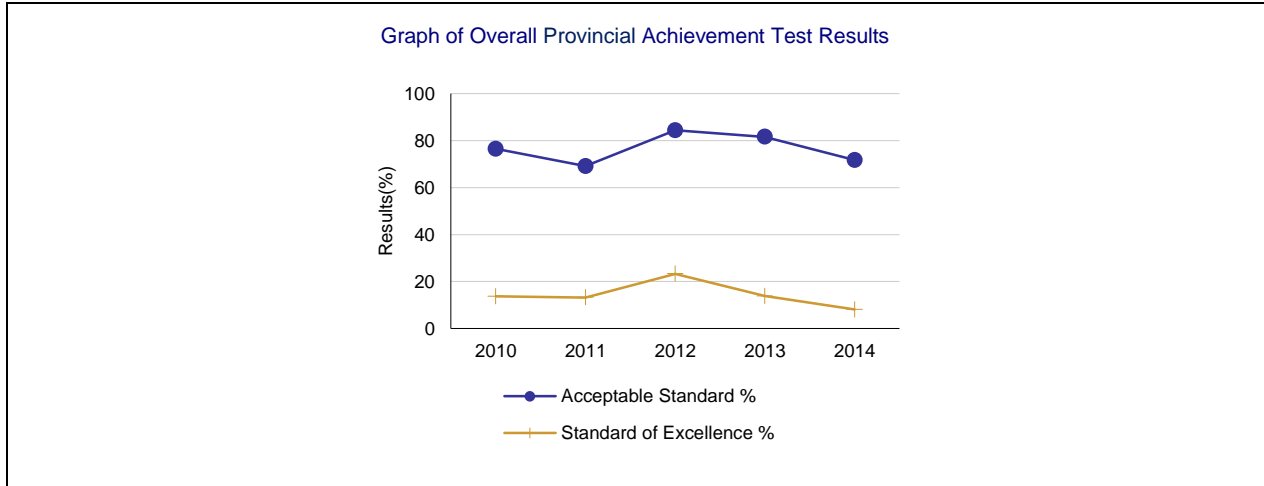
1. Increase parental involvement in learning at Crescent Valley (UPI). *All staff*
2. Update the school web page on a monthly basis to ensure information is current. *Administration*
3. Ensure open lines of communication and sharing of information through school newsletter, web page, parent meetings... *Admin.*
4. Encourage teachers to complete the "Classroom News" section on the school web page each month. *Admin, Classroom teachers*
5. Utilize the school sign to inform the public of school events/school news. *Administration*
6. Distribute copies of the monthly school newsletter to each family within the school. *Principal and Administrative assistant*
7. Distribute "user friendly" versions of school reports to all stakeholders (SIP, AERR, Budget, PAT results). *Principal*
8. Continue to invite parents to monthly assemblies where students' social and academic improvements are recognized and celebrated. *Teachers and Administration*

APPENDIX – Measure Details

The following pages include tables and graphs that provide detailed data for the performance measures. Schools may include these under each measure/outcome to provide context and help in interpreting the results.

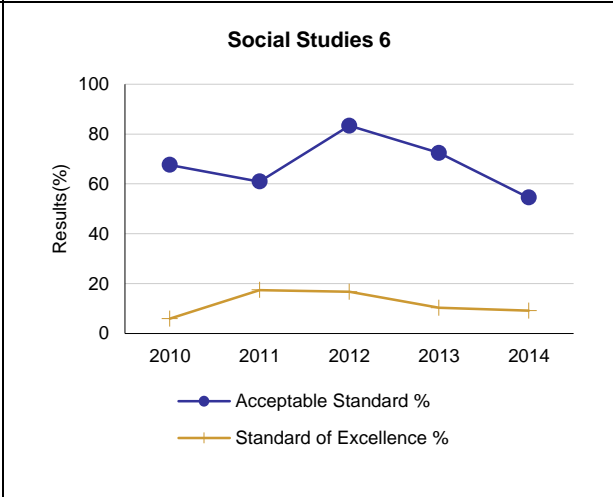
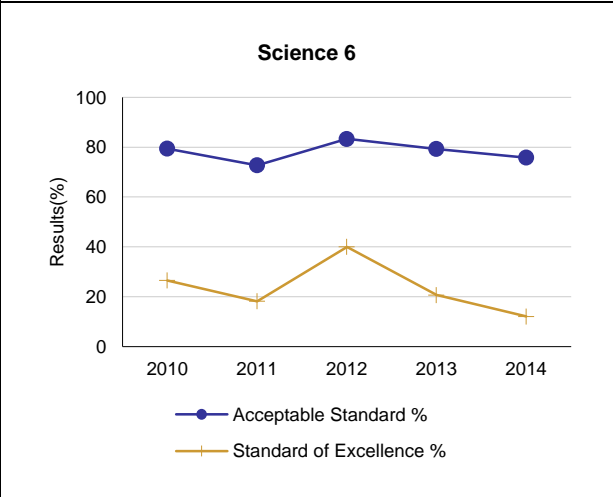
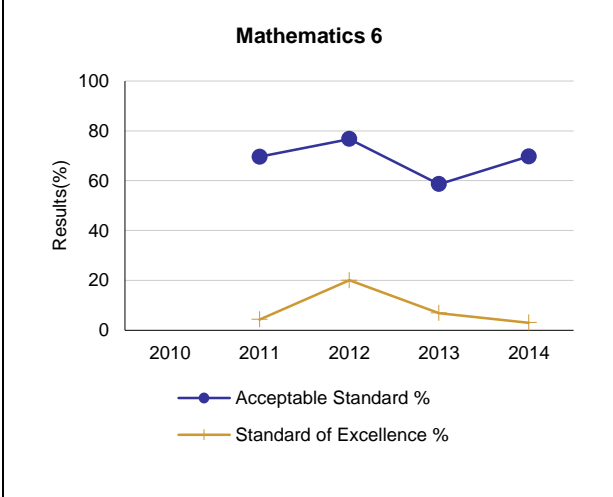
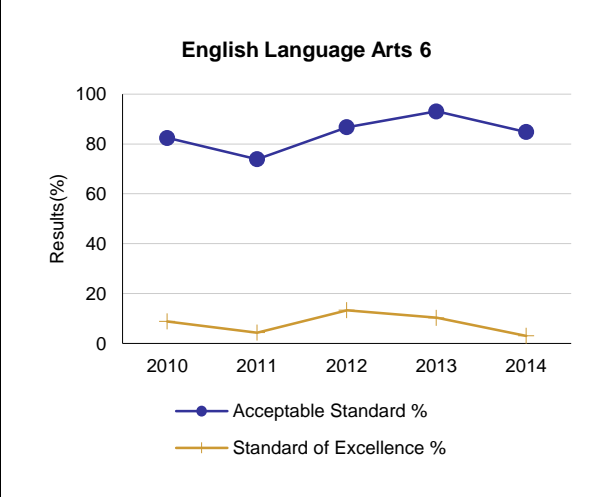
Provincial Achievement Test Results – Measure Details

PAT Course by Course Results by Number Enrolled.													
		Results (in percentages)										Target	
		2010		2011		2012		2013		2014		2014	
		A	E	A	E	A	E	A	E	A	E	A	E
English Language Arts 6	School	82.4	8.8	73.9	4.3	86.7	13.3	93.1	10.3	84.8	3.0		
	Authority	87.9	17.9	84.3	17.1	84.2	11.1	86.5	11.2	88.0	13.0		
	Province	83.3	18.9	83.0	18.5	82.7	17.8	82.5	16.3	81.9	17.6		
Mathematics 6	School	n/a	n/a	69.6	4.3	76.7	20.0	58.6	6.9	69.7	3.0		
	Authority	n/a	n/a	70.1	12.5	73.0	11.1	68.9	8.0	70.3	9.8		
	Province	n/a	n/a	73.7	17.8	74.7	16.6	73.0	16.4	73.5	15.4		
Science 6	School	79.4	26.5	72.7	18.2	83.3	40.0	79.3	20.7	75.8	12.1		
	Authority	78.1	18.6	72.8	15.1	72.9	18.5	80.4	16.7	73.0	15.3		
	Province	76.8	26.4	76.2	25.0	77.8	28.2	77.5	25.9	75.9	24.9		
Social Studies 6	School	67.6	5.9	60.9	17.4	83.3	16.7	72.4	10.3	54.5	9.1		
	Authority	68.9	11.3	65.1	14.7	69.5	10.0	73.1	13.8	65.9	10.4		
	Province	71.0	16.4	71.1	18.5	73.2	19.5	72.7	19.0	70.4	16.6		



Note: Please note that participation in Grade 9 Provincial Achievement Tests was substantially impacted by the flooding in June 2013. Caution should be used when interpreting trends over time for the province and those school authorities affected by the floods.

Graph of Provincial Achievement Test Results by Course



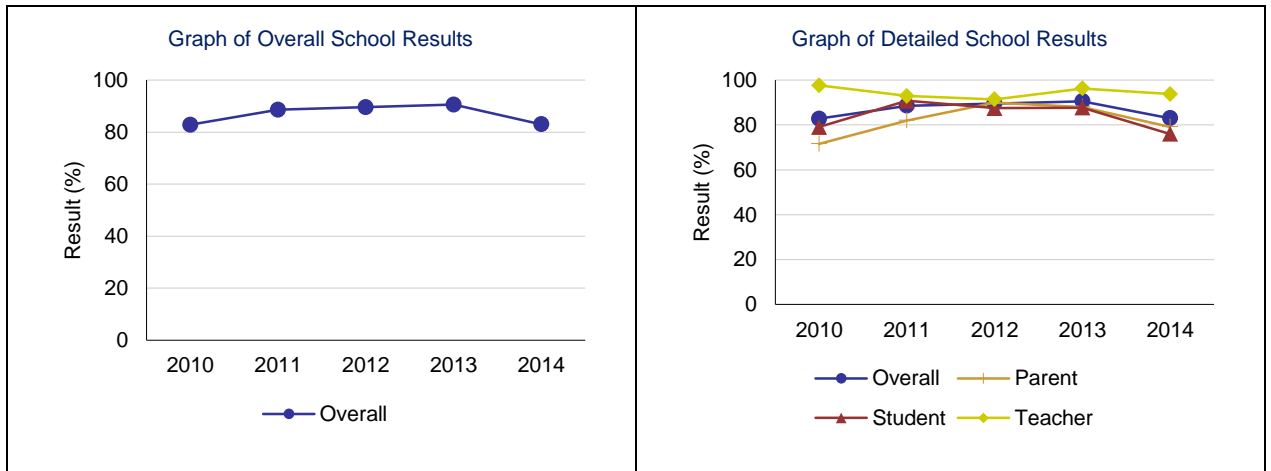
PAT Results Course By Course Summary By Enrolled With Measure Evaluation

		Crescent Valley School						Alberta				
Course	Measure	Achievement	Improvement	Overall	2014		Prev 3 Yr Avg		2014		Prev 3 Yr Avg	
					N	%	N	%	N	%	N	%
English Language Arts 6	Acceptable Standard	Intermediate	Maintained	Acceptable	33	84.8	27	84.6	45,704	81.9	43,581	82.7
	Standard of Excellence	Very Low	Declined	Concern	33	3.0	27	9.3	45,704	17.6	43,581	17.5
Mathematics 6	Acceptable Standard	Low	Maintained	Issue	33	69.7	27	68.3	45,617	73.5	43,599	73.8
	Standard of Excellence	Very Low	Declined	Concern	33	3.0	27	10.4	45,617	15.4	43,599	17.0
Science 6	Acceptable Standard	Low	Maintained	Issue	33	75.8	27	78.5	45,608	75.9	43,551	77.2
	Standard of Excellence	Low	Declined	Issue	33	12.1	27	26.3	45,608	24.9	43,551	26.4
Social Studies 6	Acceptable Standard	Very Low	Declined	Concern	33	54.5	27	72.2	45,593	70.4	43,540	72.3
	Standard of Excellence	Low	Maintained	Issue	33	9.1	27	14.8	45,593	16.6	43,540	19.0

Citizenship – Measure Details

Percentage of teachers, parents and students who are satisfied that students model the characteristics of active citizenship.

	School					Authority					Province				
	2010	2011	2012	2013	2014	2010	2011	2012	2013	2014	2010	2011	2012	2013	2014
Overall	82.8	88.6	89.6	90.6	83.0	81.4	82.2	82.1	80.5	77.5	81.4	81.9	82.5	83.4	83.4
Teacher	97.6	92.9	91.4	96.3	93.8	94.8	94.8	93.9	92.3	91.5	93.0	92.7	93.1	93.6	93.8
Parent	71.6	82.0	89.9	88.0	79.2	73.6	74.7	78.2	76.1	72.7	78.5	78.6	79.4	80.3	81.9
Student	79.1	90.8	87.5	87.7	76.0	75.9	77.1	74.3	73.0	68.3	72.7	74.5	75.0	76.2	74.5

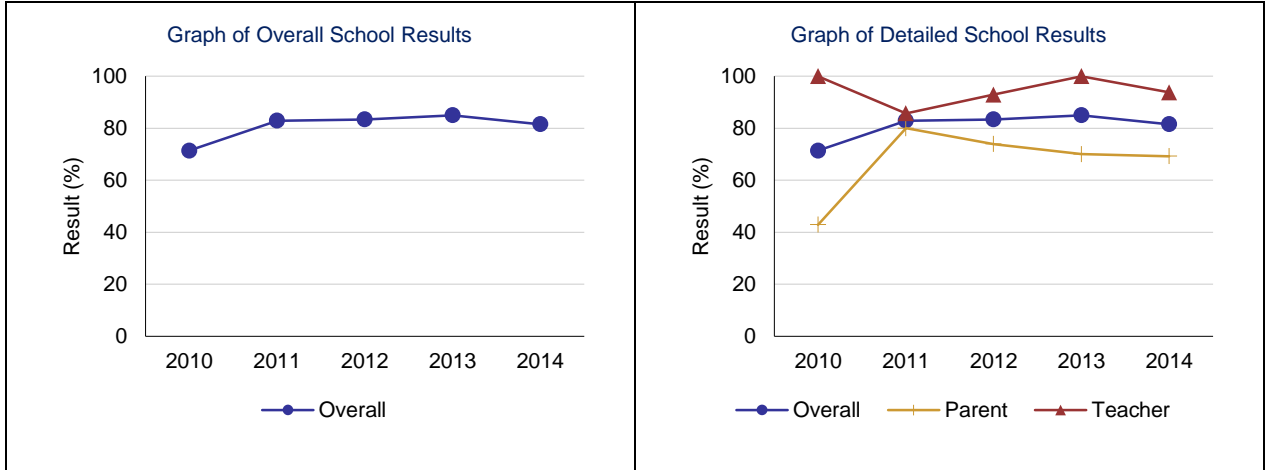


Note: Data values have been suppressed where the number of students or respondents is less than 6. Suppression is marked with an asterisk (*). Survey results for the province and some school authorities were impacted by an increase in the number of students responding to the survey through the introduction of the Tell THEM From ME survey tool in 2014.

Work Preparation – Measure Details

Percentage of teachers and parents who agree that students are taught attitudes and behaviours that will make them successful at work when they finish school.

	School					Authority					Province				
	2010	2011	2012	2013	2014	2010	2011	2012	2013	2014	2010	2011	2012	2013	2014
Overall	71.4	82.9	83.4	85.0	81.5	78.4	79.9	81.9	79.5	77.3	79.9	80.1	79.7	80.3	81.2
Teacher	100.0	85.7	92.9	100.0	93.8	96.0	95.1	94.4	92.7	92.5	90.0	89.6	89.5	89.4	89.3
Parent	42.9	80.0	73.9	70.0	69.2	60.9	64.6	69.3	66.3	62.1	69.8	70.6	69.9	71.1	73.1

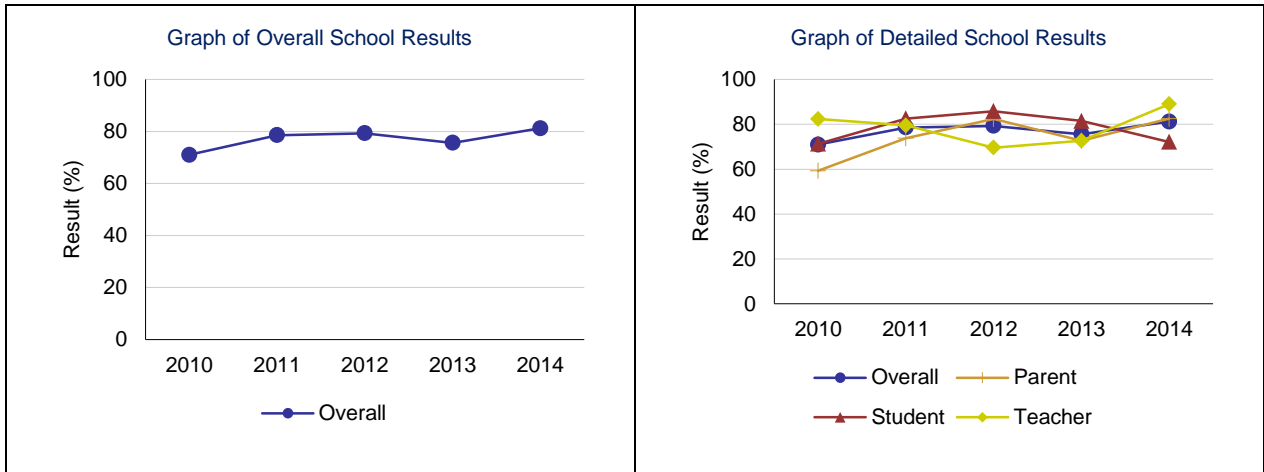


Note: Data values have been suppressed where the number of students or respondents is less than 6. Suppression is marked with an asterisk (*).

Program of Studies – Measure Details

Percentage of teachers, parents and students satisfied with the opportunity for students to receive a broad program of studies including fine arts, career, technology, and health and physical education.

	School					Authority					Province				
	2010	2011	2012	2013	2014	2010	2011	2012	2013	2014	2010	2011	2012	2013	2014
Overall	71.0	78.6	79.3	75.6	81.2	83.3	82.7	81.4	81.5	78.5	80.5	80.9	80.7	81.5	81.3
Teacher	82.4	79.5	69.6	72.7	89.0	89.3	89.0	89.8	90.1	88.8	87.7	87.6	87.3	87.9	87.5
Parent	59.3	73.8	82.4	72.7	82.5	77.5	77.8	77.6	79.0	75.8	78.0	78.3	78.1	78.9	79.9
Student	71.3	82.6	85.9	81.5	72.2	83.0	81.2	76.7	75.4	70.8	75.9	76.9	76.9	77.8	76.6

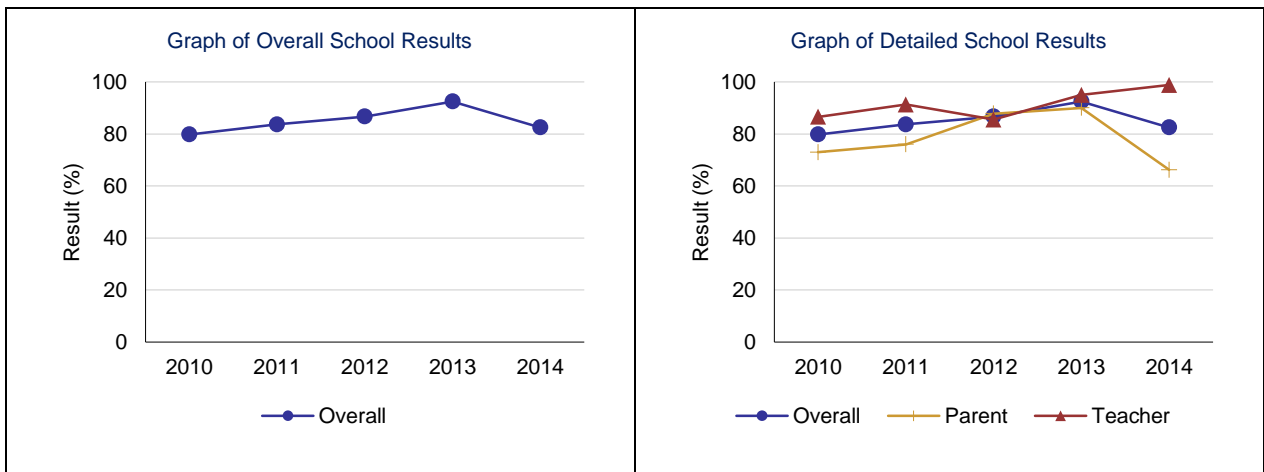


Note: Data values have been suppressed where the number of students or respondents is less than 6. Suppression is marked with an asterisk (*). Survey results for the province and some school authorities were impacted by an increase in the number of students responding to the survey through the introduction of the Tell THEM From ME survey tool in 2014.

Parental Involvement – Measure Details

Percentage of teachers and parents satisfied with parental involvement in decisions about their child's education.

	School					Authority					Province				
	2010	2011	2012	2013	2014	2010	2011	2012	2013	2014	2010	2011	2012	2013	2014
Overall	79.8	83.7	86.7	92.5	82.5	80.6	80.4	83.1	82.7	78.2	80.0	79.9	79.7	80.3	80.6
Teacher	86.6	91.3	85.5	95.0	98.8	92.4	92.1	92.3	93.1	90.6	88.6	88.1	88.0	88.5	88.0
Parent	73.0	76.0	87.8	90.0	66.2	68.9	68.7	74.0	72.2	65.9	71.3	71.7	71.4	72.2	73.1

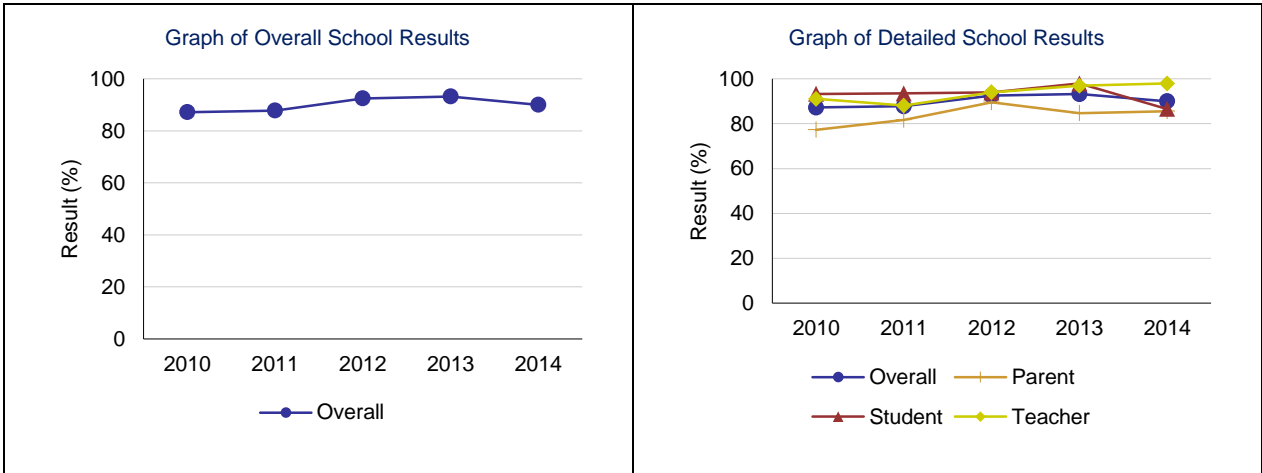


Note: Data values have been suppressed where the number of students or respondents is less than 6. Suppression is marked with an asterisk (*). Survey results for the province and some school authorities were impacted by an increase in the number of students responding to the survey through the introduction of the Tell THEM From ME survey tool in 2014.

Education Quality – Measure Details

Percentage of teachers, parents and students satisfied with the overall quality of basic education.

	School					Authority					Province				
	2010	2011	2012	2013	2014	2010	2011	2012	2013	2014	2010	2011	2012	2013	2014
Overall	87.2	87.8	92.5	93.2	90.0	88.9	87.9	89.3	88.6	85.6	89.2	89.4	89.4	89.8	89.2
Teacher	91.1	88.1	94.0	96.9	97.9	96.2	95.6	96.4	96.1	95.0	95.6	95.5	95.4	95.7	95.5
Parent	77.3	81.7	89.6	84.7	85.6	80.4	79.2	83.2	81.4	77.3	83.9	84.2	84.2	84.9	84.7
Student	93.3	93.5	93.9	97.9	86.6	90.1	88.9	88.4	88.2	84.3	88.2	88.5	88.6	88.7	87.3

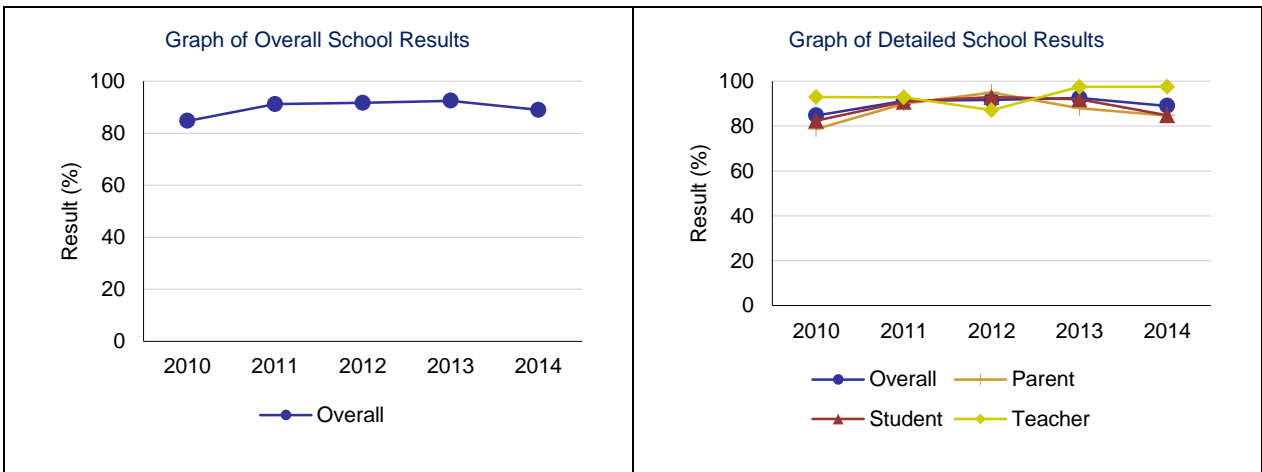


Note: Data values have been suppressed where the number of students or respondents is less than 6. Suppression is marked with an asterisk (*). Survey results for the province and some school authorities were impacted by an increase in the number of students responding to the survey through the introduction of the Tell THEM From ME survey tool in 2014.

Safe and Caring – Measure Details

Percentage of teacher, parent and student agreement that: students are safe at school, are learning the importance of caring for others, are learning respect for others and are treated fairly in school.

	School					Authority					Province				
	2010	2011	2012	2013	2014	2010	2011	2012	2013	2014	2010	2011	2012	2013	2014
Overall	84.7	91.2	91.7	92.5	89.0	87.6	88.9	88.8	88.4	86.2	87.6	88.1	88.6	89.0	89.1
Teacher	92.9	92.8	87.1	97.5	97.5	95.7	96.6	95.4	95.4	95.8	94.4	94.5	94.8	95.0	95.3
Parent	78.7	90.0	95.0	88.0	84.7	82.5	83.9	87.1	85.3	81.8	86.1	86.6	87.4	87.8	88.9
Student	82.4	90.8	92.9	91.9	84.8	84.7	86.2	84.0	84.4	80.9	82.2	83.3	83.7	84.2	83.1

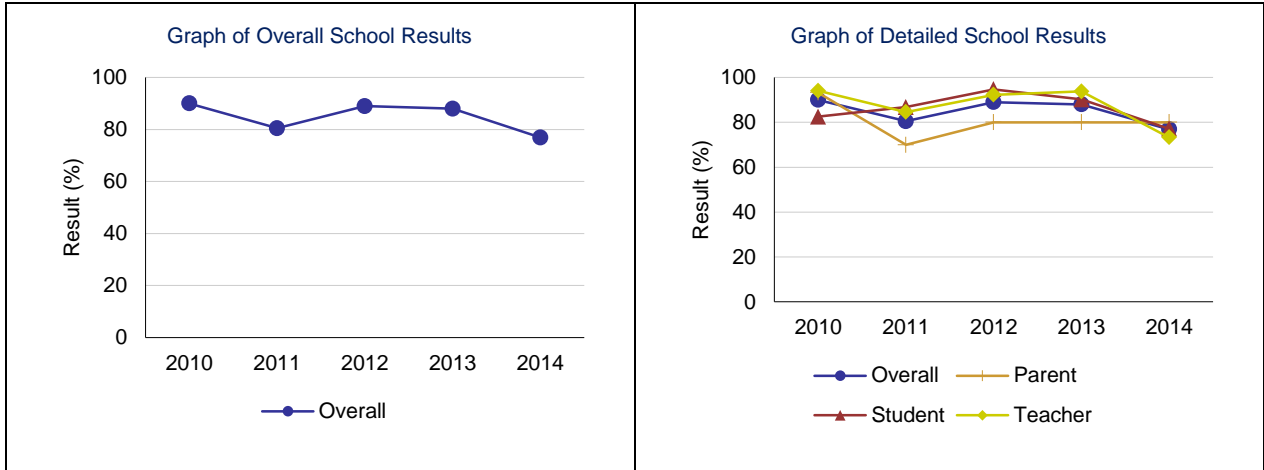


Note: Data values have been suppressed where the number of students or respondents is less than 6. Suppression is marked with an asterisk (*). Survey results for the province and some school authorities were impacted by an increase in the number of students responding to the survey through the introduction of the Tell THEM From ME survey tool in 2014.

School Improvement – Measure Details

Percentage of teachers, parents and students indicating that their school and schools in their jurisdiction have improved or stayed the same the last three years.

	School					Authority					Province				
	2010	2011	2012	2013	2014	2010	2011	2012	2013	2014	2010	2011	2012	2013	2014
Overall	90.0	80.5	89.0	88.0	76.9	82.4	81.0	81.1	80.7	78.8	79.9	80.1	80.0	80.6	79.8
Teacher	94.1	84.6	92.3	93.8	73.3	89.1	87.8	88.1	87.0	89.5	80.8	80.1	81.1	80.9	81.3
Parent	93.3	70.0	80.0	80.0	80.0	75.7	74.0	75.4	76.3	73.9	77.0	77.3	76.2	77.9	77.0
Student	82.5	86.8	94.7	90.2	77.2	82.6	81.3	79.6	78.8	73.0	81.8	82.9	82.7	82.9	81.2



Note: Data values have been suppressed where the number of students or respondents is less than 6. Suppression is marked with an asterisk (*).
 Survey results for the province and some school authorities were impacted by an increase in the number of students responding to the survey through the introduction of the Tell THEM From ME survey tool in 2014.